

*-innovation
with automation.*

ERTL

CAST PARTS DMC LASER MARKING

Our innovative traceability solution



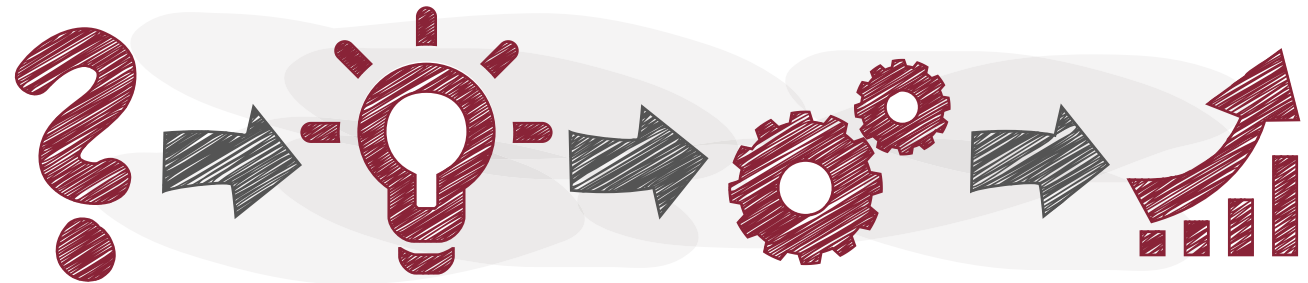
What do you get at ERTL?

We provide everything from one source

- Mechanical design
- Electrical design
- Software development
- PLC and robot programming
- Mechanical engineering
- Project management + implementation
- Production
- Control cabinet construction
- Assembly + service on site
- Quality assurance

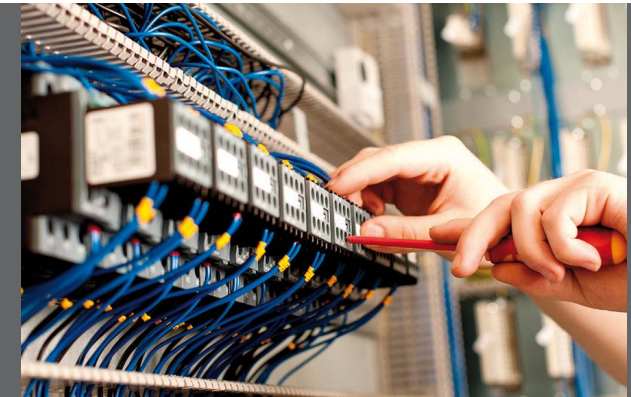
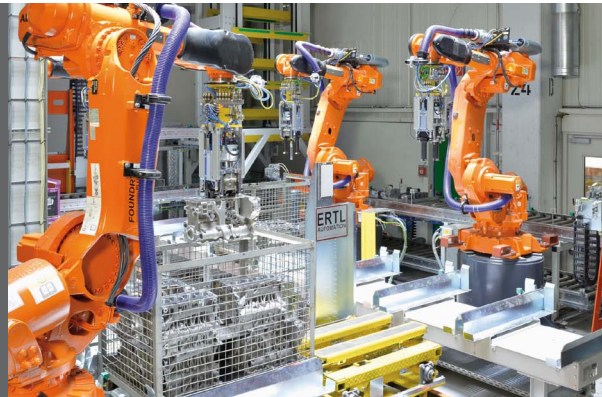
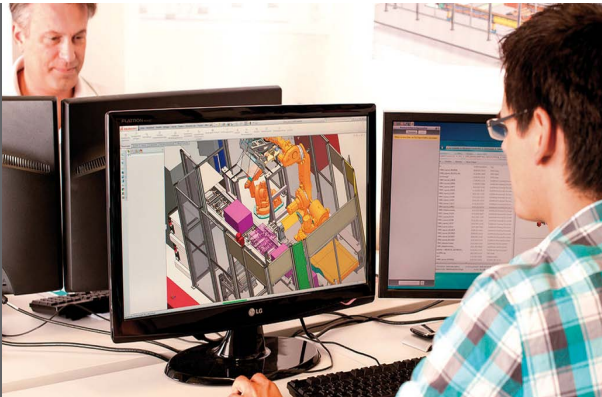
■ Your benefit

Name your task and we will provide a complete solution. You will have a single, competent contact partner for all technical and electronic challenges. Innovative and committed!



COMPLETE SOLUTIONS

We are your automation specialist
for mechanical and electronic engineering



ERTL LASER MARKING - YOUR COMPLETE SOLUTION



Your advantages:

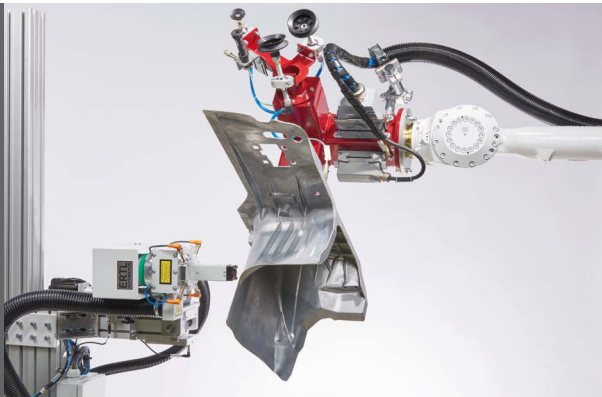
- Cycle time optimisation compared to conventional solutions (less than 3 sec. per DMC code)
- Smaller code sizes are possible
- Hot marking is possible (to up to 400 degrees)
- Independent of the material
- Laser marking possible in tight spaces
- Easy integration into existing systems
- Simple product change
- Laser-marked DMC / QR code is resistant for further surface treatment

Our laser solutions:

- Stationary intrinsically safe laser head
- Dynamic with laser robot
- Lightproof cabin

ERTL supplies:

- Customer-specific project planning
- Fully functional system including the required interfaces



ERTL VARIANT 1 - STATIONARY LASER HEAD

■ Stationary solution

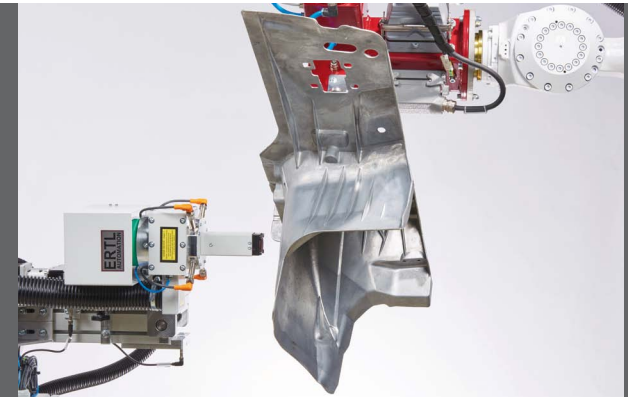
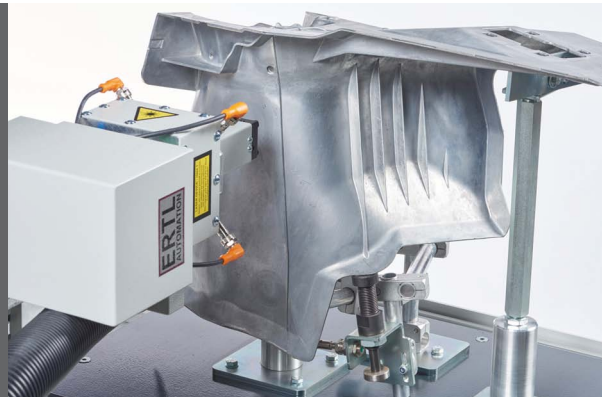
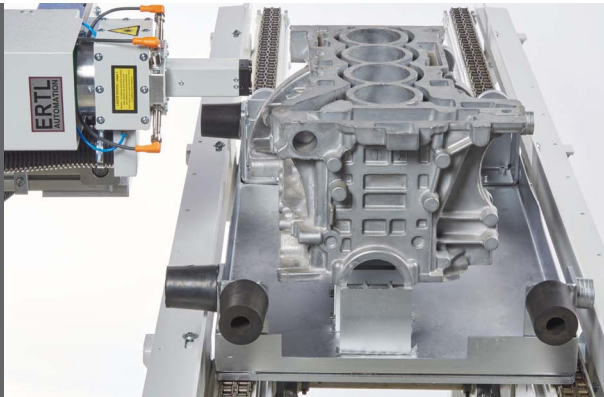
- The laser head for the DataMatrixCode is in stationary position
- The component is provided via handling robot or via materials handling technology
- The laser head is moved to the component with integrated infeed mechanism

■ Intrinsically safe laser head

- No large-scale cabin required
- Incl. protection of the lens against contamination
- Incl. extraction

■ Your advantages

- Can be integrated into existing systems
- High flexibility
- Little space requirement



ERTL VARIANT 2 - DYNAMIC WITH LASER ROBOT



■ Dynamic solution

- The laser head for the DataMatrixCode is moved to the desired position via robot

■ Intrinsically safe laser head

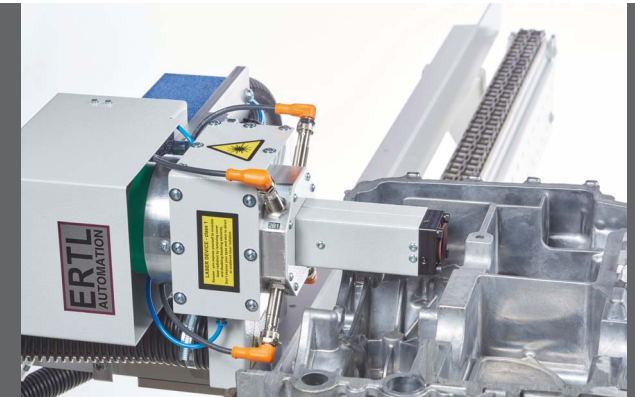
- No large-scale cabin required
- Incl. protection of the lens against contamination
- Incl. extraction

■ Your advantages

- Maximum flexibility with 6-axis robot
- Laser robot for product flexibility or multiple activities
- Fast cycle times possible
- Great variety of products, fast type change possible

■ Complete solution with PLC control

- Including control cabinet construction



ERTL VARIANT 3 - LIGHTPROOF CABIN

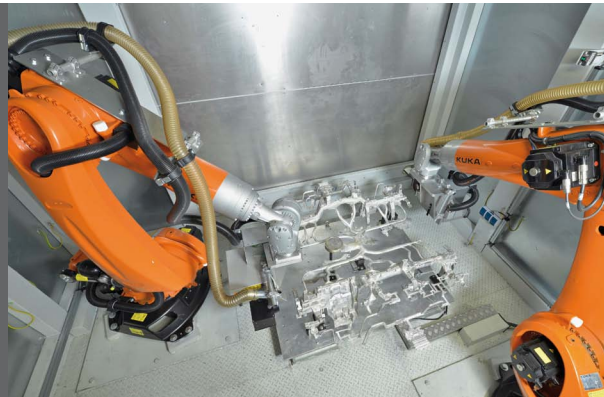
■ Closed lightproof cabin

- Lightproof laser cabin with sliding gate
- Standard laser integration according to customer request
- Stationary marking via laser head with infeed mechanism
- Flexible DMC positioning
laser head mounted on robot
- Component storage in cabin with quick-change mechanism (type change)

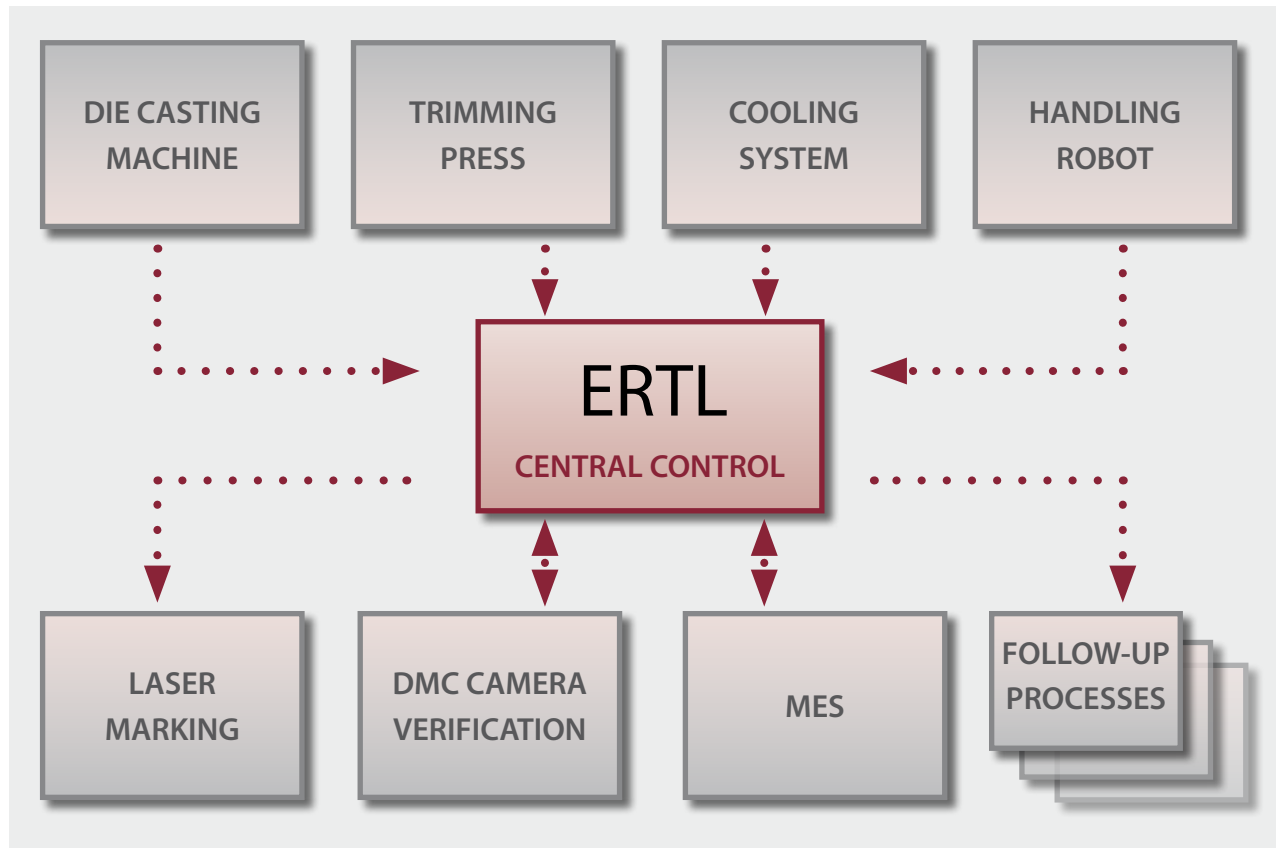
■ Laser robot for product flexibility or multiple casting

■ Your advantages

- Contactless marking
- Standard laser integration
- High component flexibility depending on cabin size

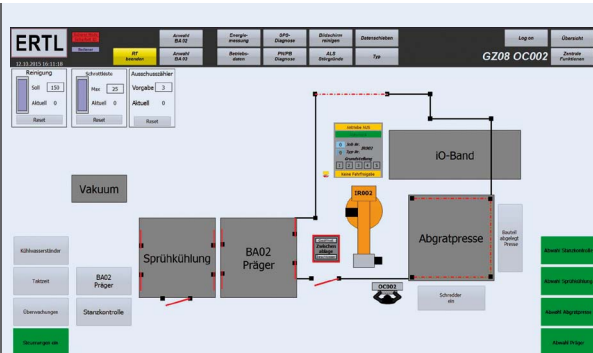


ERTL CENTRAL CONTROL



■ Our expertise

- Merging of all data from the different processes
- The DataMatrixCode is used to manage all parameters in the data system of the customer
- The ERTL central control is the super-ordinated operating and control system
- The control console technology can be used to control all communication and safety systems from one standard interface
- Safe and efficient solution for optimum networking of the systems
- Providing you with a clearly structured workplace
- Individual user-friendly surface



ERTL

*-innovation
with automation.*

ERTL Automation GmbH & Co. KG
Budapester Straße 5 | D-94315 Straubing
Tel.: +49 (0) 9421 1847-0
Fax: +49 (0) 9421 1847-20
Mail: office@ertl-gmbh.de



www.ertl-gmbh.de

CASTING TECHNIQUE



CHAIN CONVEYER SYSTEMS



CONTROL TECHNOLOGY



ROBOT TECHNOLOGY

